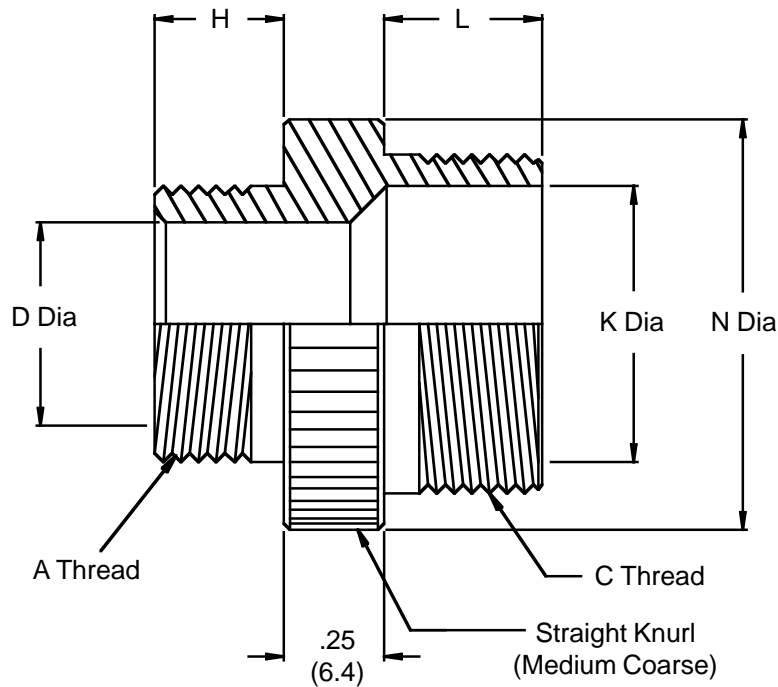
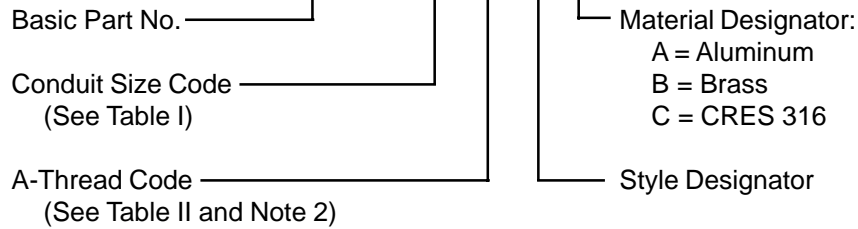


## M24758/11 Adapter for Coaxial Connectors

### M24758/11-16-01-01-A



1. The M24758/11 adapter couples coaxial connectors to M24758/2, M24758/3 or M24758/4 fittings.
2. Select an A-thread from Table II which matches that of the back of the nut on the connector being used. If none of the A-threads match, substitute the desired A-thread information in lieu of the A-thread code in the part number.  
For example, a fitting for a 0.375" conduit with a 0.5-28 A-thread of 0.313" H-length would have the part number: M24758/11-03-0.5-28-0.313-A.
3. Metric dimensions (mm) are indicated in parentheses.
4. For complete dimensions see applicable Military Specification.

# M24758/11 Adapter for Coaxial Connectors



**TABLE I**

Conduit Size Code	C Thread (Class 2A)	L		K Dia Min.		N Dia	
		±.02	(.5)			±.02	(.5)
02	0.438 - 28 UNEF	.210	(5.3)	.250	(6.4)	.687	(17.4)
03	0.563 - 24 UNEF	.250	(6.4)	.370	(9.4)	.812	(20.6)
04	0.688 - 24 UNEF	.250	(6.4)	.500	(12.7)	.937	(23.8)
05	0.813 - 20 UNEF	.310	(7.9)	.620	(15.7)	1.062	(27.0)
06	0.938 - 20 UNEF	.310	(7.9)	.750	(19.1)	1.187	(30.1)
08	1.250 - 18 UNEF	.370	(9.4)	1.000	(25.4)	1.500	(38.1)
10	1.563 - 18 UNEF	.370	(9.4)	1.250	(31.8)	1.812	(46.0)
12	1.875 - 16 UN	.430	(10.9)	1.500	(38.1)	2.125	(54.0)
16	2.375 - 16 UN	.430	(10.9)	2.000	(50.8)	2.625	(66.7)
20	2.875 - 16 UN	.430	(10.9)	2.500	(63.5)	3.125	(79.4)
24	3.375 - 16 UN	.430	(10.9)	3.000	(76.2)	3.625	(92.1)

**TABLE II (A Thread and Fitting Dimensions)**

A Thread Code	C Thread (Class 2A)	H		D Dia		Coaxial Cable	
		±.03	(.8)	±.02	(.5)	Type	OD
02	0.375 - 32 UNEF	.210	(5.3)	.226	(5.7)	RG-58	.195 (5.0)
						RG-223	.216 (5.5)
04	0.438 - 28 UNEF	.250	(6.4)	.345	(8.8)	RG-5	.332 (8.4)
						RG-6	.332 (8.4)
						RG-21	.332 (8.4)
06	0.625 - 24 UNEF	.310	(7.9)	.433	(11.0)	RG-9	.420 (10.7)
						RG-214	.425 (10.8)
08	0.688 - 24 UNEF	.310	(7.9)	.568	(14.4)	RG-14	.545 (13.8)
						RG-293	.545 (13.8)
10	0.938 - 20 UNEF	.310	(7.9)	.650	(16.5)	RG-57	.625 (15.9)
						RG-294	.630 (16.0)
12	0.813 - 20 UNEF	.310	(7.9)	.895	(22.7)	RG-7	.870 (22.1)